



Smart pi EYE is the Digital Signage, Passenger Information and Static Messaging system in the Smart pi ECOsystem.

Smart pi EYE includes the ability to manage all content for Digital Signage, Advertising and Way Finding from a single interface even for the largest of systems of many thousands of screens.

Smart pi EYE-HD hardware is installed at each screen and only requires USB power (from the screen) and a network connection with a 1080p HDMI output to the screen.

The Smart pi EYE-HD has no moving parts and is designed for use in industrial environments, the only configuration needed on the EYE-HD is its name all other parameters are managed in the Smart pi EYE Master web interface.

Smart pi EYE is a Visual Information System specifically designed for installation in all public areas.

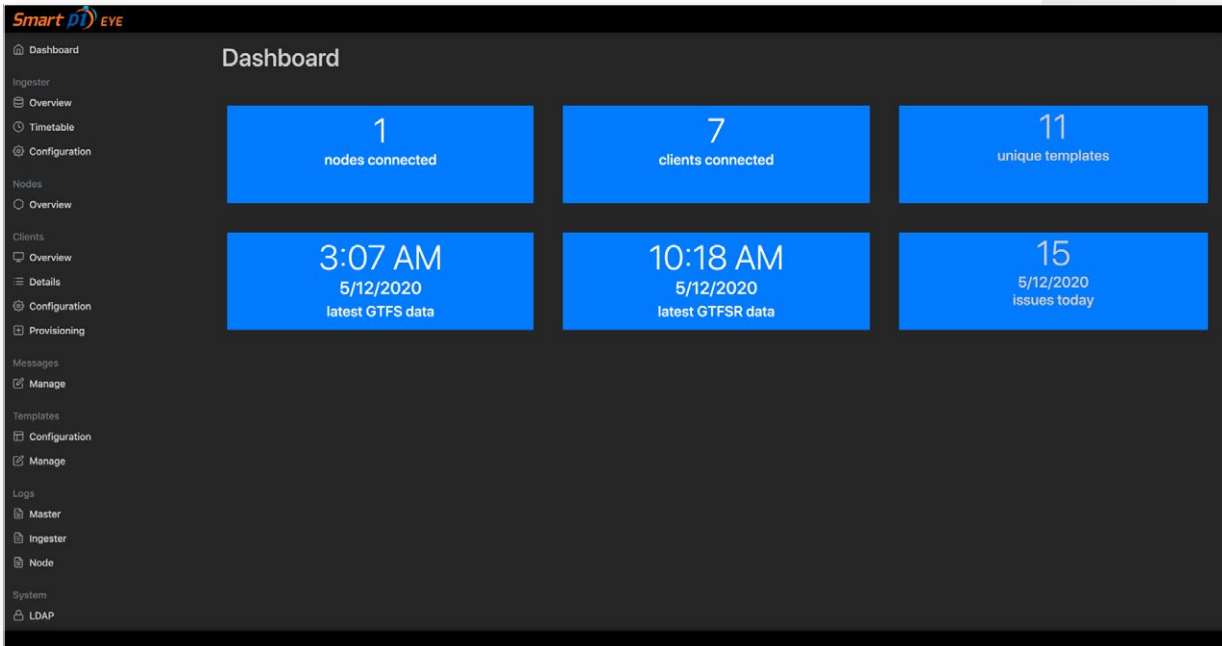
The system includes:

- CMS - Content Management System.
- PID - Passenger Information Displays.
- EYE-HD - Embedded Hardware for HDMI Output to screens.
- DSM - Digital Signage Module for static images.
- DSM - Digital Signage Module for way finding.
- DSM - Digital Signage Module for advertising.

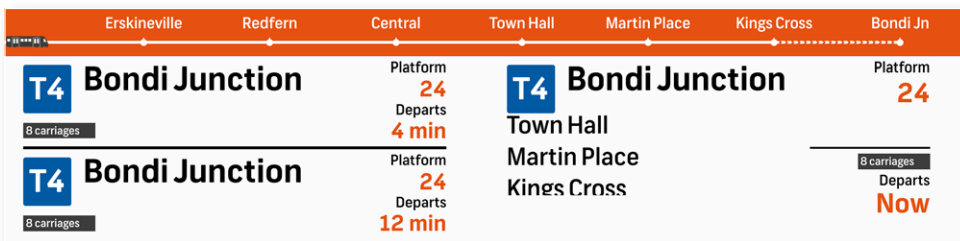
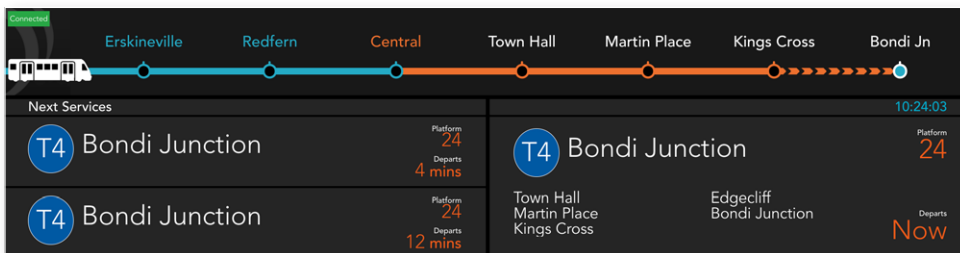
The flexible topology allows for the system to be installed in smaller environments and expanded as needed to support more displays or integrate into other services. Multiple types of displays are configured via templates.

This allows CMS Administrators to select the display type which can then automatically render the information for the Smart pi EYE-HD client in the correct format all from a single web interface, even for very large environments.

Smart pi EYE Dashboard



Template Based Solutions



Smart pi EYE Features

Smart pi EYE includes the ability to manage content for Digital Signage, Advertising and Way Finding from a single interface even for the largest of systems.

Each screen has a small embedded device which is synchronised to the server in real time outputting up to 1080P video content. The EYE hardware has an HDMI output and is powered via a 5V USB input.

Features

- Completely web based configuration and management
- Customisable and easily scalable to many thousands of screens.
- Supports GTFS / GTFS-R Dashboard and custom protocols for Passenger Information.
- Fully Integrated into NMS / DVA and Help / Information Points.
- LDAP Integration (single sign on).
- Smart pi EYE-HD hardware (no PC required for each screen).
- Generates all views automatically with no settings are stored in the client.

The Hardware:

- Smart pi EYE-HD has no moving parts.
- Controlled in Real-time via the main web interface.
- Only the device name is configured on the actual EYE-HD unit.
- Indoor and Outdoor versions available.
- Low power usage, can be powered from the USB output on the screen.

Multiple Template Options

Smart pi EYE Next Service 10:21:22

T1 North Sydney Platform **3**

Wynyard
Milsons Point
North Sydney

Departs **3 mins**

T1 Lindfield Platform **3** Departs **6 mins**

Smart pi EYE 10:21:52

T1 Hornsby Platform **3**
via Gordon

Departs **13 mins**

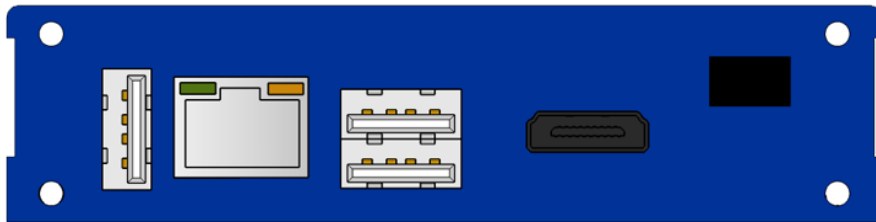
T1 North Sydney Platform **3**

Departs **17 mins**

Smart pi EYE Next Services 10:23:10

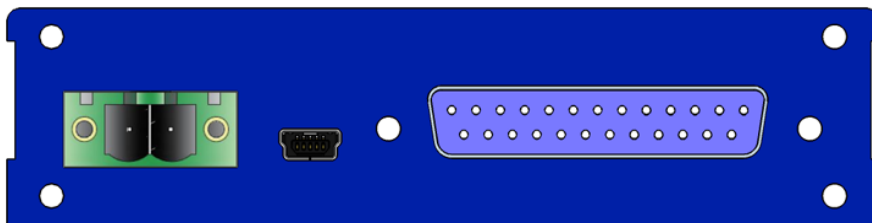
Due	Destination	Departs	Platform
10:24	Kiama	1m	4
10:24	North Sydney	1m	3
10:25	Central	1m	2
10:27	Bondi Junction	4m	5

Front



- 3 x USB
- Ethernet
- HDMI
- Status Screen

Rear



- Micro USB - 5v power
- 2 x GPI/O
- 2 x Balanced Audio Outputs
- Status Screen